

 **accento**

Fabrics / Tissus / Stoffe / Tessuti

---

**Category A**   
fireproof

**Amsterdam**

**page 7.**



**Bombay**

**page 8.**



**Inca**

**page 9.**



**Angel**

**page 10.**



**Velvety**

**page 11.**



**Grisù**

**page 12.**



**Avantgarde**

**page 13.**





## Smart Collection

page 14.



fireproof



imo-med



water repellent

Smart Velvet

Smart Chenille

Smart Super Structure

Smart Linen

# Category B



Lani

page 15



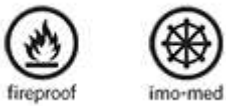
Ponza

page 16



Sole

page 17.



Bhaluka

page 18.



California TB 117:2013

Ada

page 19.



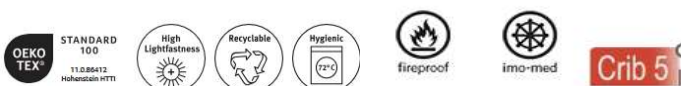
Cosy

page 20.



Harper

page 21.



# Category B



fireproof



recycled

## Wilson

page 22.



## Colour Connect

page 24.



## Zenith

page 24.



# Real Leather

Soft Unito

page 26.

Ocean

page 27.



## CATEGORY A



water repellent



fireproof

Crib 5

## Amsterdam FR

DIN EN 1021-2

BS 5852 Source 1

BS 5852 Source 5 / Crib 5

UNI 9175 2010 CLASSE 1.IM

Composition 100% Polyester

Width 140 cm +/-2%

Weight 550 gr/m2 +/-5%

Category **Contract, Upholstery**

Usage  

Treatment 

Care     



**ABRASION RESISTANCE >100.000**



<https://www.mercis.si/product/amsterdam-fr/>

## CATEGORY A



Crib 5

# Bombay FR

EN 1021-2

BS 5852 Source 1

BS 5852 Source 5 / Crib 5

UNI 9175 2010 CLASSE 1.IM

Composition Surface/Back: 100% Polyester/100% Polyester

Width 140 cm +/-2%

Weight 350 gr/m2 +/-5%

Category **Contract, Plain, Upholstery**

Usage  

Treatment  

Care     



ABRASION RESISTANCE >100.000



<https://www.mercis.si/product/bombay-fr/>



## CATEGORY A



# INCA

### features

88% pvc - 6% polyester - 6% cotton

### width

cm ± 140

### weight

± 650 g/m<sup>2</sup>

### thickness

± 0,95 mm

### roll length

approx. 30 lm.

### abrasion resistance

> 100.000 rubs, ISO 5470-2

### fastness to rubbing

dry 4, wet 4, ISO 105 X 12.

### tensile strength

warp > 300 N/5 cm, weft > 200 N/5 cm, ISO 1421

### sustainability

phthalate free

### fire resistance

11M - UNI 9175

EN 1021:14 part 1/2

BS 5852:06 part 1, is 1

NF-P 92 503 - M2

California TB 117:2013

IMO MED - Ftp 307 part 8

ÖNOM B 3825 - schwer brennbar.



Inca, a fire-retardant and resistant imitation leather that is suitable for any contract use as it is stretchy and pleasant to the touch. It comes in a range of 70 different colours.



<https://abitec.eu/en/inca/61/prdd.php>

## CATEGORY A



fireproof

Crib 5

# ANGEL

### features

100% polypropylene

### width

cm ± 140

### weight

± 228 g/m<sup>2</sup>

### dyeing

solution dyed product

### roll length

approx. 35 lm.

### abrasion resistance

> 100.000 rubs, ISO 12947-2

### fastness to rubbing

dry 5, wet 4/5, ISO 105 X12

### seam slippage

warp 3 mm, weft 4 mm, ISO 13936-2

### pilling

5, ISO 12945-2

### fire resistance

11M - UNI 9175

EN 1021:14 part 1/2

BS 5852:06 crib 5

California TB 117:2013

IMO MED - Ftp 307 part 8

### attention

slight colour differences between different batches are allowed we assume no responsibility for the transfer of colour/pigment caused by clothing and accessories



<https://abitex.eu/en/angel-fire-retardant-fabric-fabric-angel-fire-retardant-yarn/32/prdd.php>

## CATEGORY A



fireproof



imo-med



sound  
absorbent

**Crib 5**

# velvety

### features

100% polyester.

### width

cm  $\pm$  150; upon request available  
in 300 cm width (only rolls).

### weight

$\pm$  320 gr/m<sup>2</sup>.

### dyeing

piece dyed product.

### roll length

approx. 30 lm., can also be cut-to-  
length at an extra cost.

### abrasion resistance

> 50.000 rubs, ISO 12947-2.

### fastness to rubbing

dry 5, wet 4, ISO 105 X12.

### seam slippage

warp 3 mm, weft 3 mm, ISO  
13936-2.

### pilling

5, ISO 12945-2.

### sound absorption

$\alpha_w$  0,65 folded;  
 $\alpha_w$  0,55 not folded;  
ISO 354 - G-100 type.

### fire resistance

1IM - UNI 9175;  
classe 1 - UNI 9177;  
class 1 - EN 13773;  
EN 1021 part 1/2;  
BS EN 1021 part 1/2;  
BS 7176 + A1 medium hazard;  
BS 5852 crib 5;  
BS 5867 part 2 type B;  
BS 5867 part 2 type C;  
NF-P 92 503 - M1;  
NF D60-013 (AM18);  
DIN 4102 - B1;  
NFPA 701;  
NFPA 260 Class 1;  
California TB 117:2013;  
IMO MED 3.20 - Ftp 307 part  
8;  
IMO MED 3.19 - Ftp 307 part  
7;  
ÖNOM B 3825 - schwer  
brennbar.



<https://abitex.eu/en/velvety/112/prdd.php>



## CATEGORY A



# grisu' Frisé

### features

68% polyester, 32% polypropylene.

### width

± 140 cm.

### weight

± 400 g/m<sup>2</sup>.

### dyeing

solution dyed warp and yarn dyed weft.

### roll length

aprox. 35 lm, can also be cut-to-length at an extra cost.

### abrasion resistance

> 135.000 rubs, ISO 12947-2.

### color fastness to light

> 6, ISO 105 B02.

### seam slippage

warp 3 mm, weft 3 mm, ISO 13936-2.

### pilling

4/5, ISO 12945-2.

### sound absorption

α<sub>w</sub> 0,75 folded;  
α<sub>w</sub> 0,60 not folded;  
ISO 354 - G type.

### fire resistance

iIM - UNI 9175;  
classe 1 - UNI 9177;  
EN 1021 part 1/2;  
NF D-60 013 - A18;  
DIN 4102 - B1;  
NFPA 260 Class 1;  
California TB 117:2013;  
IMO MED 3.20 - Ftp 307 part 8;  
ONOM B 3825 - normal brennbar.



<https://abitex.eu/en/grisu-fire-retardant-frise-fabric-fabric-grisu-is-produced-with-fire-retardant-yarn/90/prdd.php>

## CATEGORY A



Crib 5

# avantgarde

### features

68% pvc - 1% polyurethane - 31% cotton.

### width

cm  $\pm$  140.

### weight

$\pm$  630 gr/m<sup>2</sup>.

### thickness

$\pm$  1,0 mm.

### roll length

approx. 25 lm, can also be cut-to-length at an extra cost.

### abrasion resistance

> 50.000 rubs, ISO 5470-2.

### color fastness to light

5/6, ISO 105 B02.

### fastness to rubbing

dry 4, wet 4, ISO 105 X12.

### tensile strength

warp 550 N, weft 435 N, ISO 1241.

### sustainability

phtalete free.

### fire resistance

1IM - UNI 9175;  
EN 1021 part 1/2;  
BS 5852 part 1, is 0 and 1;  
BS 5852 crib 5;  
California TB 117:2013;  
IMO MED - Ftp 307 part 8.



<https://abitex.eu/en/avantgarde/56/prdd.php>

## CATEGORY A

### Smart Velvet



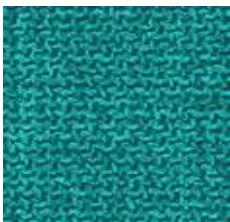
<https://abitex.eu/en/smart-velvet/171/prdd.php>

### Smart Chenille



<https://abitex.eu/en/smart-chenille/168/prdd.php>

### Smart Super Structure



<https://abitex.eu/en/smart-super-structure/170/prdd.php>

### Smart Linen



<https://abitex.eu/en/smart-linen/164/prdd.php>

## **CATEGORY B**



# lani

description

**tough, felted wool quality in modern applicable colours**

composition

**80% wool / 20% polyamide**

width

**± 140 cm, ± 55 inches**

weight

**± 640 gr/m<sup>1</sup>, ± 21 oz/yd<sup>1</sup>**

flame retardancy

**EN 1021/ 1-2**

**BS 5852, crib 5 with FR finish**

**DIN 4102, B2 with FR finish**

**UNI VF 9175, classe 1 IM**

**Cal TB 117**

**NFPA 260, class 1**

**IMO 2010 FTP part 8**

**NF D 60-013 - AM18**



<https://www.vescom.com/en/dessin/lani?c=6978>



# CATEGORY B



fireproof

**Crib 5**

## ponza

### composition

100% flame retardant polyester

### width

± 140 cm, ± 55 inches

### weight

± 850 gr/m<sup>2</sup>, ± 27 oz/yd<sup>2</sup> fabrics

### flame retardancy

EN 1021/1-2

NF P 92/503-507, M1

DIN 4102, B1

UNI 9175, classe 1 IM

IMO 2010 FTP part 8

BS 5852, crib 5

NFPA 260, class 1

Cal TB 117

### abrasion

ISO 12947-2

100.000 rubs martindale

ASTM D4157

100.000 double rubs wyzenbeek

### pilling

ISO 12945-2

3 (scale 1-5)

ASTM D3511

3 (scale 1-5)

### colorfastness to light

ISO 105-B02

5 (scale 1-8)

AATCC 16.3: 40 hours

4 (scale 1-5)

### seam slippage

ISO 13936 - 2

warp 6 mm / weft 6 mm

ASTM D4034

warp 103 lbs / weft 101 lbs

### breaking strength

ASTM D5034

warp 282 lbs / weft 185 lbs

### care



shrinkage: warp -1.6% / weft -0.5%



shrinkage: warp -2.0% / weft -0.5%



<https://www.vescom.com/en/dessin/ponza>



## CATEGORY B



# SOLE CS

**Composition**  
100% Trevira CS

**Width**  
Ca. 140 cm

**Weight**  
525 g/m<sup>2</sup> (+/- 5%)

**Abrasion resistance**  
50.000 Martindale cycles  
(EN ISO 12947-2)

**Pilling**  
4/5 (EN ISO 12945-2)

**Flammability**  
UNI 9177 - Classe 1  
NFP 92-503-507 M1  
California TB 117:2013  
EN 1021-1&2  
BS 5852-Part 0-1 (C&M)  
DIN 4102 B1  
UNI 9175 - 1.IM  
NFPA 260:2013  
IMO MSC 307(88) Annex 1 Part 7-8

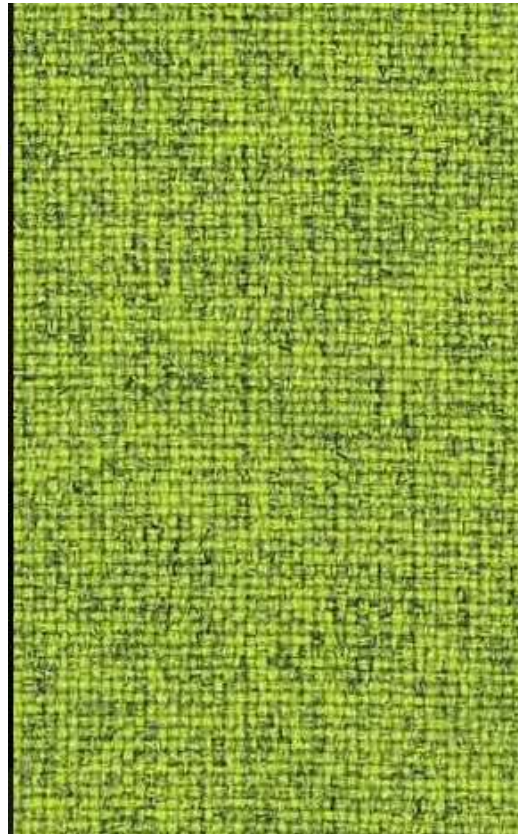
**Sound absorption**  
UNI EN ISO 354:2003 w : 0,60

**Light fastness**  
5 (EN ISO 105-B02)

**Light fastness**  
5 (EN ISO 105-B02)

**Fastness to rubbing**  
Wet 4/5; Dry 4/5 (EN ISO 105X12)

**Cleaning**  
Wet cleaning warp  
Please see the ISO symbols  
Shrinkage app. 2,5%



<https://onemariosirtori.com/fabrics/sole-cs>

## CATEGORY B



California TB 117:2013

# BHALUKA 01

## COMPOSITION

70% Acrylic  
23% Polyester  
7% Cotton

## WIDTH

App. 140 cm

## WEIGHT

790 g/m<sup>2</sup> (+/- 5%)

## FLAMMABILITY

California TB 117:2013  
BS 5852 Part 0-1 (C&M)

## ABRASION RESISTANCE

>38000 Martindale cycles (EN ISO 12947-2)

## PILLING

4 (EN ISO 12945-2)

## LIGHT FASTNESS

5 (EN ISO 105-B02)

## FASTNESS TO RUBBING

Wet 3/4; Dry 5 (EN ISO 105- X12)

## CLEANING

Do not wash  
Do not bleach  
Iron at low temperature  
Gentle cleaning with PCE  
Do not tumble dry  
Spotstaining with spray detergent dry cleaning  
Please see the ISO symbols



<https://onemariosirtori.com/fabrics/bhaluka-01>

## CATEGORY B

# Ada



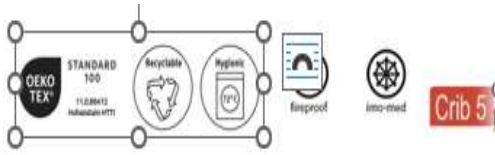
Fabric width	approx. 140 cm
Weight per m <sup>2</sup>	approx. 430 g/m <sup>2</sup>
Repeat Pattern	no repeat
Composition	100% Polyester FR
Flame retardancy	IMO 2010 FTP Code Part 8, IMO 2010 FTP Code Part 7, M 1, 1 / M, C1, BS 5852 CRIB 5, BS 5867 Typ B, EN 13773, DIN EN 1021-2, DIN EN 1021-1, DIN 4102 / B1 Flammability performance is dependant on the foam used.
Light fastness	note 5
Wash fastness 40°C DIN EN ISO 105-C06	note 4-5
Wash fastness 60°C DIN EN ISO 6330 DIN EN ISO 5077	note 4-5
Wash fastness 72°C DIN EN ISO 6330 DIN EN ISO 5077	note 4-5
Dimensional change Washing 40°C DIN EN ISO 6330 DIN EN ISO 5077	warp approx. +/-1%, weft approx. +/-1%
Dimensional change Washing 60°C DIN EN ISO 6330 DIN EN ISO 5077	warp approx. +/-2%, weft approx. +/-1%
Dimensional change Washing 72°C DIN EN ISO 6330 DIN EN ISO 5077	warp approx. +/-3%, weft approx. +/-2%
Rubbing fastness DIN EN ISO 105-X12	dry: note 4-5, wet: note 4-5
Abrasion to Martindale	approx. 100000 rubs



<https://delius.de/en/products/contract-fabrics/ada/>

## CATEGORY B

### Cosy



### Bouclé

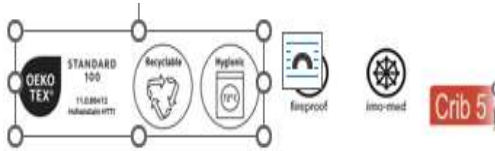
Fabric width	approx. 140 cm
Weight per m <sup>2</sup>	approx. 500 g/m <sup>2</sup>
Repeat Pattern	no repeat
Composition	100% Polyester FR
Flame retardancy	IMO 2010 FTP Code Part 8, 1 / M, BS 5852 CRIB 5, DIN EN 1021-2, DIN EN 1021-1, CAL TB 117, NFPA 260 Flammability performance is dependant on the foam used.
Light fastness	note 6
Wash fastness 40°C DIN EN ISO 105-C06	note 4-5
Wash fastness 60°C DIN EN ISO 6330 DIN EN ISO 5077	note 4
Dimensional change Washing 40°C DIN EN ISO 6330 DIN EN ISO 5077	warp approx. +/-3%, weft approx. +/-1%
Dimensional change Washing 60°C DIN EN ISO 6330 DIN EN ISO 5077	warp approx. +/-4%, weft approx. +/-1%
Rubbing fastness DIN EN ISO 105-X12	dry: note 4, wet: note 4-5
Abrasion to Martindale DIN EN ISO 12947-2 DIN EN 14465-2006	approx. 50000 rubs
Pilling DIN EN ISO 12945-2	Note 4-5 at 2000 rpm



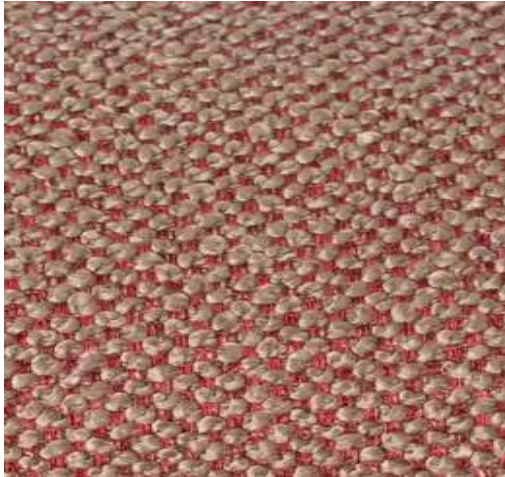
<https://delius.de/en/products/contract-fabrics/cosy/>



## CATEGORY B



## Harper



Fabric width	approx. 140 cm
Weight per m <sup>2</sup>	approx. 350 g/m <sup>2</sup>
Repeat Pattern	no repeat
Composition	100% Polyester FR
Flame retardancy	IMO 2010 FTP Code Part 8, 1 / M, BS 5852 CRIB 5, DIN EN 1021-2, DIN EN 1021-1, CAL TB 117, NFPA 260 Flammability performance is dependant on the foam used.
Light fastness	note 6
Wash fastness 40°C DIN EN ISO 105-C06	note 4-5
Wash fastness 72°C DIN EN ISO 6330 DIN EN ISO 5077	note 3-4
Dimensional change Washing 30°C	warp approx. +/-1%, weft approx. +/-1%
Dimensional change Washing 40°C DIN EN ISO 6330 DIN EN ISO 5077	warp approx. +/-2%, weft approx. +/-1%
Dimensional change Washing 72°C DIN EN ISO 6330 DIN EN ISO 5077	warp approx. +/-4%, weft approx. +/-2%
Rubbing fastness DIN EN ISO 105-X12	dry: note 4-5, wet: note 4-5
Abrasion to Martindale DIN EN ISO 12947-2 DIN EN 14465-2006	approx. 75000 rubs



<https://delius.de/en/products/contract-fabrics/harper/>

## CATEGORY B

# wilson



Crib 5

### description

**plain upholstery fabric made from 100% recycled plastic waste, a matte non-directional structure with a soft touch**

### composition

**100% recycled polyester FR**

### width

**± 150 cm, ± 59 inches**

### weight

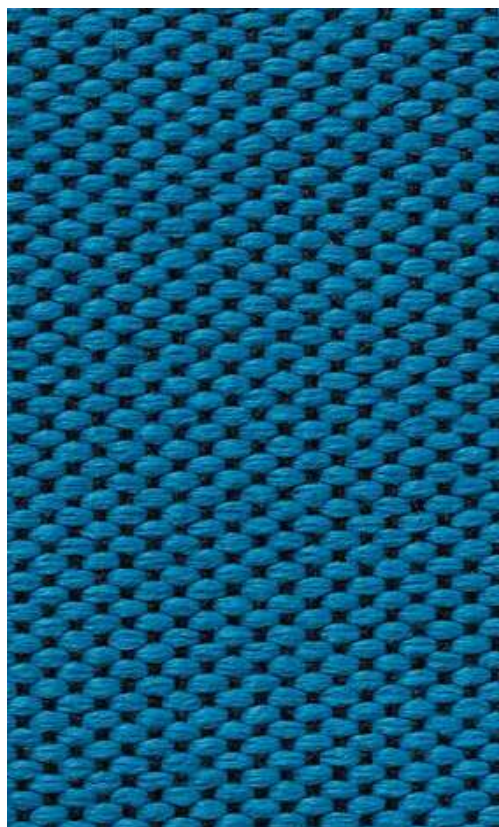
**± 771 gr/m<sup>1</sup>, ± 25 oz/yd<sup>1</sup>**

### flame retardancy

**EN 1021/ 1-2  
BS 5852, crib 5  
NF D 60-013 (AM 18)  
DIN 4102, B1  
UNI 9175, classe 1.IM  
Cal TB 117  
NFPA 260, class 1  
IMO 2010 FTP part 8**

### abrasion

**ISO 12947-2  
80.000 rubs martindale  
ASTM D4157  
100.000 double rubs wyzenbeek**



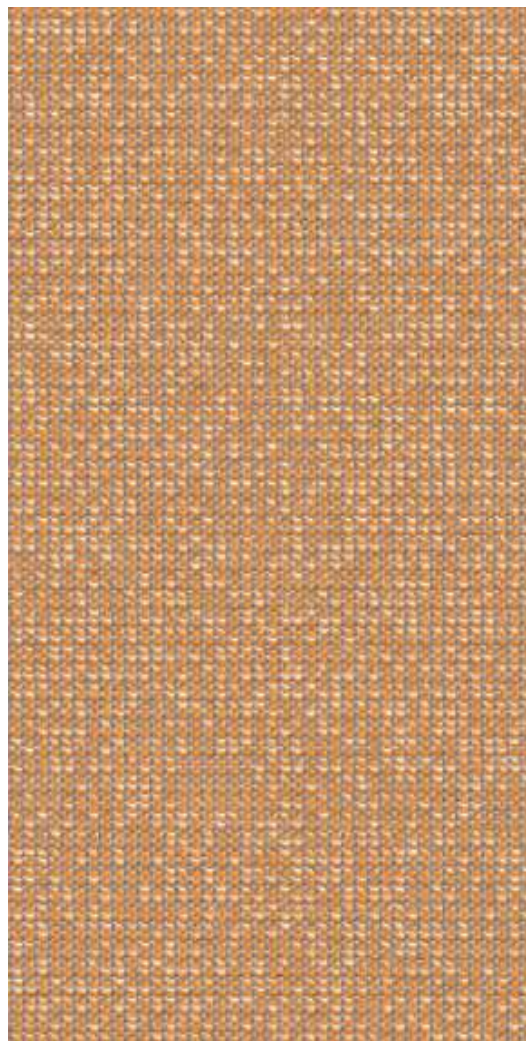
<https://www.vescom.com/en/dessin/wilson>

## CATEGORY B

# Colour Connect



Product	Colorfastness to light
Upholstery	ISO 105 B02
Description	6 (scale 1-8)
Plain upholstery fabric in a large colour range	AATCC 16.2 opt.1 or 16.3 opt. 3
	5 (scale 1-5)
Composition	Seam slippage
100% recycled polyester FR	ISO 13936-2
Width	warp 3.3 mm / weft 2.3 mm
± 150 cm, ± 59 inches	ASTM D4034
	warp 121 lbf / weft 109 lbf
Weight	Labels
± 435 gr/m <sup>2</sup> , ± 14 oz/yd <sup>1</sup>	 USCG - EU AMRA 0038
Flame retardancy	 STANDARD 100 521-2004 November 2013
EN 1021/1-2, Pass	Care & Maintenance
BS 5852, Crib 5	
DIN 4102, B1	
Cal TB 117-2013, section 1, Pass	Shrinkage
IMO 2010 FTP part 8, Pass	Shrinkage 70° - warp +2%
NFPA 260, Class 1	Shrinkage 70° - weft -1.5%
Colorfastness to crocking	
ISO 105 X12	
wet 4-5 (scale 1-5) / dry 4-5 (scale 1-5)	
AATCC 8	
wet 5 (scale 1-5) / dry 5 (scale 1-5)	



<https://vescom.com/en/products/colour-connect>



# CATEGORY B

## Zenith



### Product

Upholstery

### Description

Two-tonal woven grid upholstery fabric with a random all-over pixelated accent

### Composition

100% recycled polyester FR

### Width

± 146 cm, ± 58 inches

### Weight

± 523 gr/m<sup>2</sup>, ± 17 oz/yd<sup>2</sup>

### Flame retardancy

EN 1021/1-2, Pass

BS 5852, Crib 5

NF P 92/503-507 or NF D 60-013, M1

DIN 4102, B1

Cal TB 117-2013, section 1, Pass

IMO 2010 FTP part 8, Pass

NFPA 260, Class 1

### Colorfastness to crocking

ISO 105 X12

wet 4-5 (scale 1-5) / dry 4-5 (scale 1-5)

AATCC 8

wet 5 (scale 1-5) / dry 5 (scale 1-5)

### Colorfastness to light

ISO 105 B02

6 (scale 1-8)

AATCC 16.2 opt.1 or 16.3 opt. 3

5 (scale 1-5)

### Seam slippage

ISO 13936-2

warp 4 mm / weft 3 mm

ASTM D4034

warp 139 lbf / weft 106 lbf

### Labels



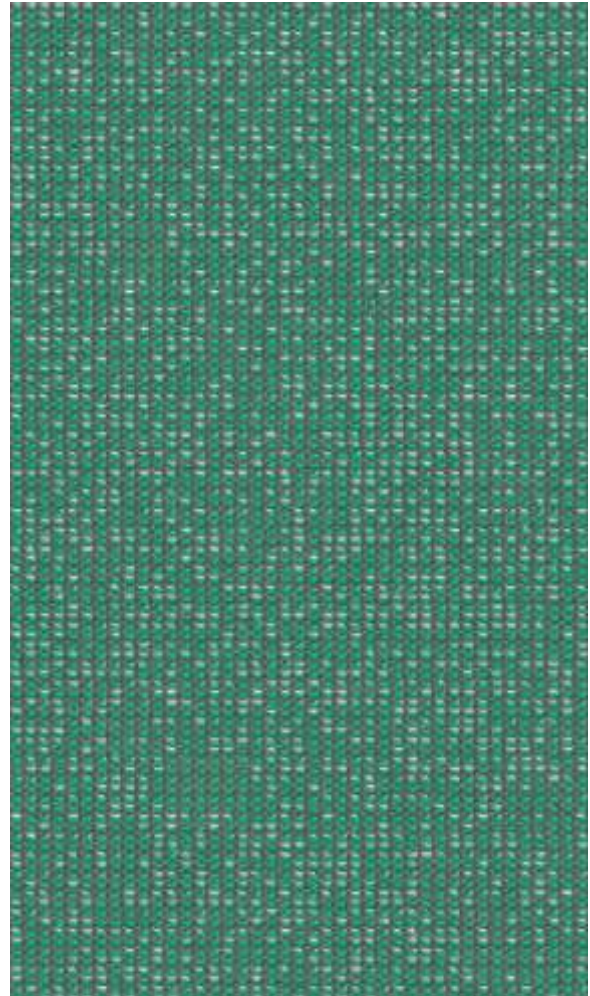
### Care & Maintenance



### Shrinkage

Shrinkage 70° - warp -2.8%

Shrinkage 70° - weft -2.2%



<https://vescom.com/en/products/zenith>



# REAL LAETHER

## SOFT UNITO

Leather: BOVINE  
Tanning: CHROMO  
Dyeing: BARREL ANILINE

Dry rubbing – 500 cycles (IUF 450)	Grey scale $\geq 4$
Wet rubbing – 250 cycles (IUF 450)	Grey scale $\geq 4$ Grey scale $\geq 3/4$
Perspiration – 80 cycles (IUF 470)	Newton/cm $\geq 2$
Finish adhesion (IUP 402)	blue scale $\geq 5$
Colour fastness to light (IUP 402)	Newton $\geq 20$
tear resistance (IUP 40)	No surface damage or cracks $\geq 20.000$
Flexing endurance - 50.000 cycles (IUP 20)	Ph $\geq 3,2$



A solid color leather with a semi-glossy appearance. The vast assortment of colors, which is renewed over the years, accompanied by the classic Madras print, makes this item one of the most versatile and refined. Thickness 0.9 - 1.1 mm  
Medium size 4.20 m<sup>2</sup>



<https://www.tipiesse.eu/soft-unito>

# REAL LEATHER

## Ocean



## Ocean

INTERIORS & DESIGN

FASHION

BOATS



Scope 1 and 2

La collezione Ocean, pelle bovina di provenienza europea, è caratterizzata da una lavorazione che le trasferisce un look fine e omogeneo. Questa pelle si distingue per una mano morbida, un tatto setoso e un aspetto opaco raffinato. Un articolo ideale per i brand dell'arredamento che cercano materiali di elevata durabilità e prestazioni al top per le loro creazioni di interior design.

The Ocean collection features European-sourced bovine leather with a finish that gives it a fine and uniform look. This leather is noted for its soft texture, silky feel and refined matte appearance. It's an ideal choice for furniture brands looking for highly durable materials and top performance for their interior design creations.



European origin



Thickness 0.8-1.0 mm



Average size 52-54 sf



Chrome tanning



Dyed through

Analisi Test	Metodo di prova Test method	Unità di misura Measurement unit	Garantito Guaranteed
Resistenza allo strappo pantalone Tear strength (single edge tear)	UNI EN ISO 3377-1	N	≥ 20
Solidità del colore allo strofinio (secco, 500 cicli) Colour fastness to rubbing (dry, 500 cycles)	UNI EN ISO 11640:1998	Scala dei grigi Grey scale	≥ 4
Solidità del colore allo strofinio (umido, 250 cicli) Colour fastness to rubbing (wet, 250 cycles)	UNI EN ISO 11640:1998	Scala dei grigi Grey scale	≥ 4
Solidità del colore allo strofinio (sudore, 80 cicli) Colour fastness to rubbing (sweat, 80 cycles)	UNI EN ISO 11640:1998 ISO 11641 pH8	Scala dei grigi Grey scale	≥ 4
Resistenza alle flessioni (secco, 50.000 cicli) Flexing endurance (dry, 50.000 cycles)	UNI EN ISO 5402	-	Nessun danno No damage
Adesione della rifinitura (a secco) Finish adhesion (dry)	UNI EN ISO 11644	N/cm	≥ 2
Solidità del colore alla luce artificiale (energia di esp. 16.000 kJ/m²) Colour fastness to artificial light (exp. energy 16.000 kJ/sqm)	UNI EN ISO 105 B02 (MET. 5)	Scala dei blu Blue scale	≥ 5
Resistenza al fuoco, alla sigaretta e alla piccola fiamma Smolder resistance, cigarette and match flame	CAL TB-117 (2013, Sec 1) BS 5852: 1979, source 0-1 BS EN 1021-1-2:2006	-	Passa Pass



La pelle di Gruppo Mastroto è stata sottoposta al sistema di misurazione Biobased, certificato dal Dipartimento di Agricoltura degli Stati Uniti (USDA). La percentuale Biobased rappresenta il carbonio organico derivato da materiale rinnovabile, rispetto al carbonio di origine fossile. Il metodo utilizzato per la quantificazione è l'ASTM International D6866.

Gruppo Mastroto leather has been subjected to the Biobased measurement method, certified from the United States Department of Agriculture (USDA). The Biobased percentage represents the organic carbon that originates from renewable material, compared to fossil carbon. The analytical method used to quantify the amount is in according to ASTM International D6866.



[www.biobased.org](http://www.biobased.org)

LEATHER CARE

Evitare la luce diretta del sole.  
Evitare l'esposizione alle fonti di calore.  
Avoid direct sunlight.  
Avoid exposure to heat sources.



0575

Reg. II-2/3, Reg. II-2/5, Reg. II-2/9, Reg. X/3, Reg. II-2/3, Reg. II-2/5, Reg. II-2/9, IMO Res. MSC.38(63)-(1994 HSC Code), 7 IMO Res. MSC.97(73)-(2000 HSC Code), 7 IMO Res. MSC.307(88)-(2010 FTP Code), IMO/MSC/Circ.1102.



<https://www.mastroto.com/en/collections/ocean>

accento

**Italian Designer Furniture since 1931**

Accentto Srl

Via Palmarina 18, 33048 San Giovanni al Natissone Udine/Italy

Ph. +39 0432 746590 - Fax +39 0432 743183

[info@accentosrl.it](mailto:info@accentosrl.it)

[www.accentosrl.it](http://www.accentosrl.it)

[Facebook](#) - [Instagram](#) - [Pinterest](#)

